

PART OF SEC. 1, T.7N., R.2E. & PART OF SEC. 6, T.7N., R.3E., S.L.B. & M.

55

**SUNRIDGE SUBDIVISION NO. 3**  
**LOTS 57 TO 62, 68 TO 72 & 74 TO 76**  
**WEBER COUNTY**

TAXING UNIT: 58

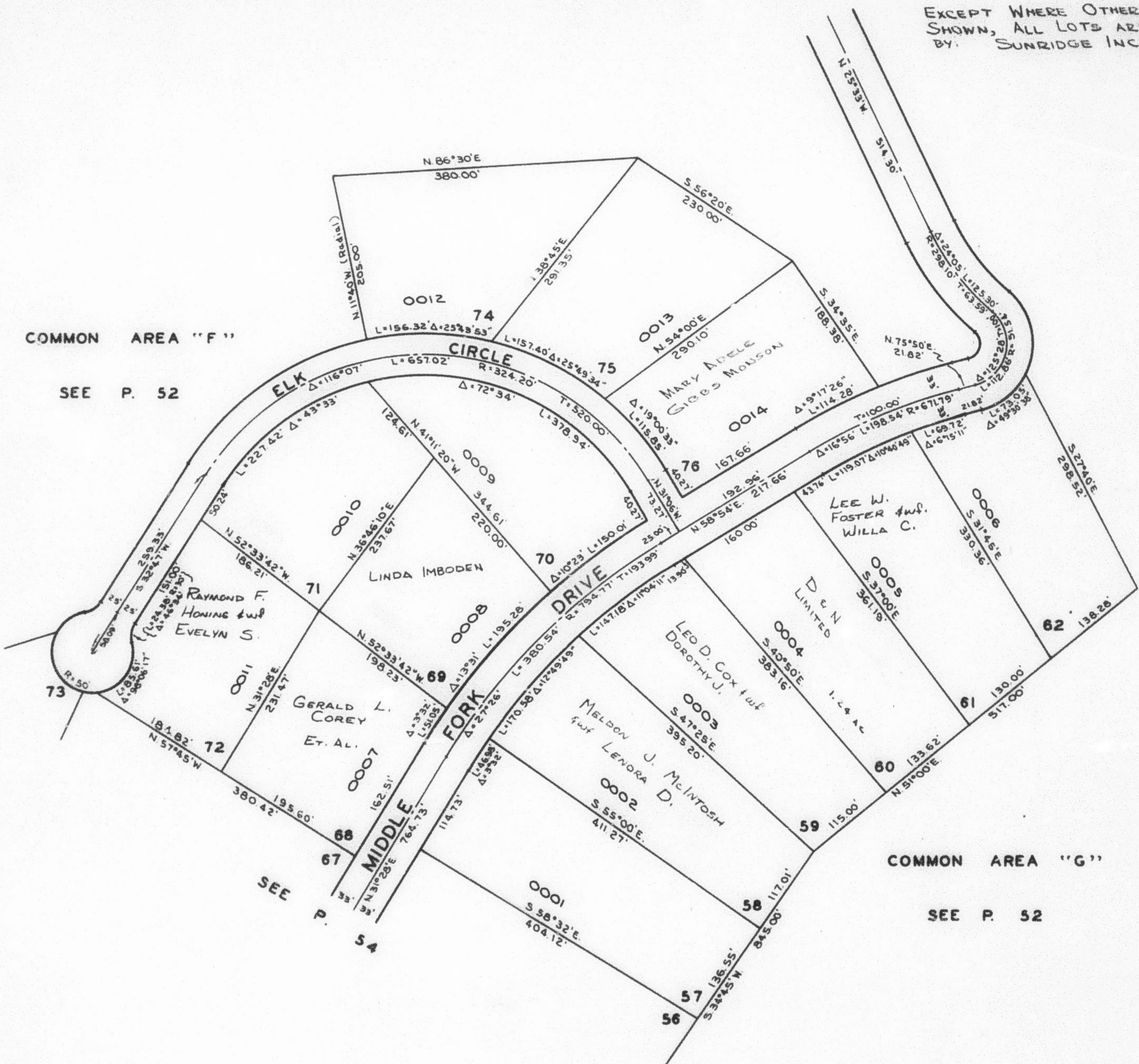
SCALE 1" = 100'

PREFIX: 23-055

EXCEPT WHERE OTHERWISE  
SHOWN, ALL LOTS ARE OWNED  
BY: SUNRIDGE INC.

COMMON AREA "F"

SEE P. 52



COMMON AREA "G"

SEE P. 52